



CERTIFICATE IV IN SCHOOL BASED EDUCATION SUPPORT

Teacher Aide
Course

CHC40221: COURSE OUTLINE

www.adapteducation.com.au

1300 380 335

LEARN

ADAPT

SUCCEED

COURSE OVERVIEW

Welcome to Adapt Education!

This course is suitable if you are currently working as or seeking to work as a teacher aide in a primary, secondary or special needs school. This Nationally Recognised course consists of 17 units:

CHC40221 Certificate IV in School Based Education Support

CHCDIV001 Work with diverse people

CHCEDS033 Meet legal and ethical obligations in an education environment

CHCEDS047 Assist in facilitation of student learning

CHCEDS051 Facilitate learning for students with disabilities

CHCEDS046 Support student literacy learning

CHCEDS045 Support student mathematics learning

CHCEDS059 Contribute to the health, safety and wellbeing of students

CHCEDS058 Support the implementation of behaviour plans

CHCEDS048 Work with students in need of additional learning support

CHCEDS056 Provide support to students with autism spectrum disorder

CHCPRT001 Identify and respond to children and young people at risk

HLTWH001 Participate in workplace health and safety

CHCEDS049 Supervise students outside the classroom

CHCPRP003 Reflect on and improve own professional practice

CHCECE054 Encourage understanding of Aboriginal and/or Torres Strait Islander Peoples cultures

HLTAID012 Provide first aid in an education and care setting

CHCDIS004 Communicate using augmentative and alternative communication strategies

Alternate Elective units (E) may be available. Please discuss with an enrolment officer.

ENTRY REQUIREMENTS

While not mandatory, you should have completed a Certificate III or higher level qualification OR have experience in education or child related employment. It is expected that students have well developed written and verbal communication skills, basic numeracy skills and basic computer operating skills. A working with children check (also known as a blue card in Qld) must be obtained prior to conducting your vocational placement.

STUDY MODE

Study is **self-paced** meaning that you can study at times and locations that suit you. No assessment due dates and no timetabled lectures. Fast track your study or take your time – the choice is yours.

Blended, onsite and **classroom** study modes are available on request. Please discuss with an Adapt Education staff member.

WEBINARS AND TUTORIALS

Webinars: Every module is supported by a webinar. Webinars cover the key concepts of a module and give you a head start on your assessment. Can't make the live webinar? No problems, you can view webinar recordings at a time that suits you.

Tutorials: These are optional video conference sessions in a small group environment. Ideal for students who have learning difficulties, study anxiety, "procrastination-itis", or simply those who feel they would benefit from a supportive and structured environment.

www.adapteducation.com.au

1300 380 335



LEARN

ADAPT

SUCCEED

DURATION

You will have up to 2 years to complete but can progress at any pace.

As a guide someone allocating 2-3 days per week on assessment could expect to complete the course in 24—28 weeks. *Note: This timeframe can vary significantly depending on an individual's life and work experience, current knowledge and study habits.*

Students receiving the Centrelink education supplement will be obligated to complete the course in: 40 weeks (full time) or 69 weeks (part time) .

PRACTICAL

Students not currently working in the education support industry will be required to complete 100 hours practical placement as part of their study. You may choose to do your placement as a full time block or part time. The placement can be completed at any stage during your course. Adapt Education can arrange your placement for you or you can arrange your own. Additional hours (up to 100hrs) may be required for school based students, students on a traineeship, Early School leavers or those that have been assessed as having limited work/life experience. This will enable more time to develop skills in a work setting.

GOVERNMENT FUNDING

This course is approved for funding through the following agencies/programs:

- Higher Level Skills Subsidy (eligible QLD residents only)
- Centrelink (Education Supplement)

Contact us and we will let you know if you or your employer may attract funding.

Higher Level Skills Subsidy

To be eligible for this subsidy you must:

- Be aged 15 years or above and no longer be at school
- Permanently reside in Queensland
- Be an Australian citizen or New Zealand citizen or Australian permanent resident (including those with a visa on the pathway to permanent residency).
- Not hold or be currently enrolled in a Certificate IV or higher level qualification (Does not include qualifications completed at school or abroad)

Students approved for the Higher Level Skills Subsidy will pay a student contribution fee. Concession card holders, Aboriginal or Torres Strait Islander people and will receive a concession. All students completing or discontinuing their studies will be required to complete a Training and Employment student survey.

PAYMENT

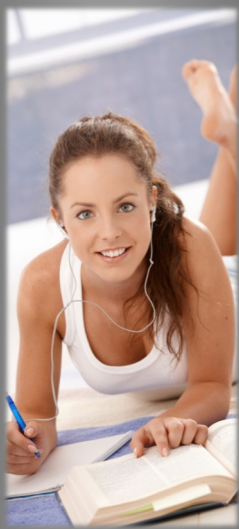
Payment plans are offered with no additional fees or charges. You can nominate the instalment amount and frequency you are comfortable with.

CHC40213 Certificate IV in Education Support	Non-Concessional	Concessional
Standard course fee	\$2,500	\$2,500
<i>Higher Level Skills Subsidy</i> —Student contribution fee	\$200 (\$11.76/unit)	\$100 (\$5.88/unit)

- *Price quoted is for self-paced study. Contact us for a quote on blended, onsite or classroom modes.*
- *Contact us for information on discounted corporate and group rates.*
- *Enrolments cannot be accepted from international students or those on a student or education visa.*
- *Additional fees apply if you are completing the first aid unit as part of your course.*

www.adapteducation.com.au

1300 380 335



LEARN

ADAPT

SUCCEED

HOW TO ENROL

Read the Student Handbook and this Course Outline before you enrol:

1. Go to adapteducation.com.au/enrol/ to complete your enrolment online; OR
2. Call us on 1300 380 335 to enrol over the phone

CHOOSE ONLINE OR CORRESPONDENCE

Online: benefit from an easy to navigate elearning course. The online course is interactive, meaning less readings and more visually engaging resources.

Correspondence: receive a hard copy textbook. All other resources are provided on a USB stick meaning assessment can be completed in an offline environment.

STUDENT SUPPORT

Regardless of the study mode you select, you will have unlimited access to your trainer through phone, email and instant messaging. We pride ourselves on having quick response times to every query. Delivery and assessment of this course can be customised. Please discuss your options with Adapt to ensure that we have created the course that best suits you.

ASSESSMENT

Your assessment consists of two key areas:

- Theory assessment: multi choice, written questions, case studies and projects.
- Practical assessment: includes demonstration of your skills in the workplace. Recorded as observations by your supervisor, practical placement person or trainer.

FIRST AID

You have the option of selecting *HLTAID012 Provide first aid in an education and care setting* as an elective unit within this course. Contact Adapt Education to see if there is an upcoming class near you available. Cost is \$100 if completing through Adapt.

If completing HLTAID012 through another provider:

- The cost of the first aid unit is not included in Adapt Education's course fee. You will need to pay the listed course fee to your selected first aid provider.
- Check the unit code - Ensure the course you book includes the unit HLTAID012.
- Provide a copy of your Statement of Attainment to Adapt in order to receive a Credit Transfer.

COURSE COMPLETION

On successful completion of all course requirements you will be issued a Certificate IV in School Based Education Support (CHC40221).



ADAPT EDUCATION RTO # 32452 | PO Box 5830 Manly QLD 4179 | info@adapteducation.com.au

www.adapteducation.com.au

1300 380 335